

SpinPac ASC 200/300

Wafer Level Frontside, Backside and Edge Coating

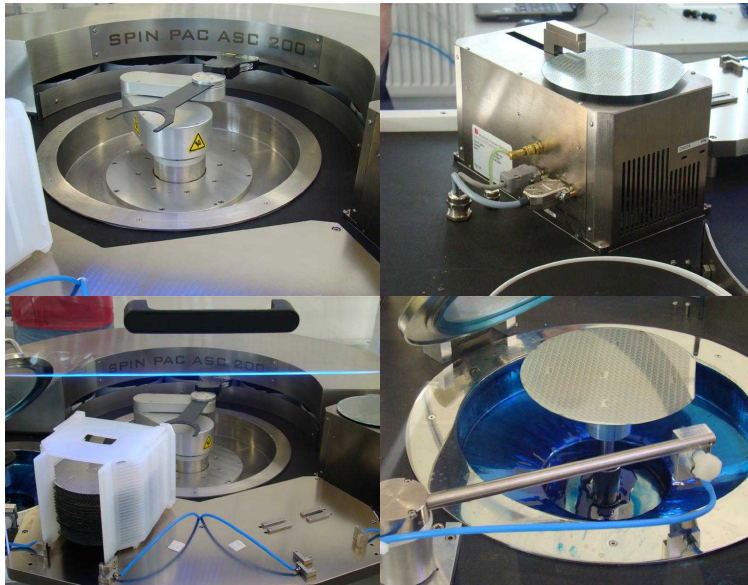
Resist or Flux Coating for Wafers up to 12"

Specifications:

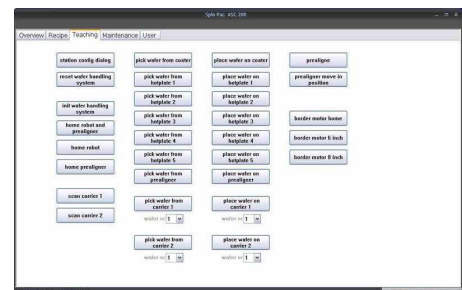
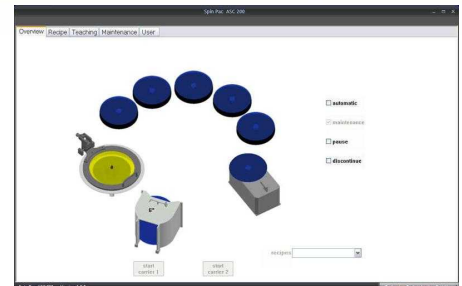
- Wafer thickness 0,1 to 1 mm
- Full automatic handling system
- Wafer sizes: 6 – 8 or 12 inch
- No tooling cost
- Volume production & prototyping capability
- Stainless Steel Body
- Free programmable time for pre heating and final heating
- Temperature free adjustable from 0 – 200` C
- Prealigner for Wafer handling
- Edge Coating
- Automatically handling for Wafer up to 50 /hour
- Semi conform HMI
- Exhaust can be connect to exhaust system
- Small Footprint
- Process logging



SpinPac ASC 200



SpinPac ASC 200



Semi conform HMI

Pac Tech GmbH
Am Schlangenhorst 15-17
14641 Nauen
Germany



Pac Tech USA Inc.
328 Martin Avenue
Santa Clara, CA 95050
USA

Tel: +49 (0)3321-4495-100
Fax: +49 (0)3321-4495-110
Email: sales@pactech.de

Tel: +1 408-588-1925
Fax: +1 408-588-1927
Email: sales@pactech-usa.com

Pac Tech Asia Sdn. Bhd.
Plot 14, Medan Bayan Lepas
Technoplex, Phase 4
Bayan Lepas Industrial Zone
1190 Bayan Lepas, Penang
Malaysia

Tel: +60 (4) 6440 986
Fax: +60 (4) 6449 987
Email: sales@pactech-asia.com

Pac Tech Thailand (Service Center)
98/286 Moo 9
Romruengarden vill Sol 5
Chiangragnoi, Ayutthaya 13160
Thailand

Tel: +66 899275852
Fax: +66 357422768
Email: customer.service@pactech-asia.com